

Community  
Foundation  
campus

**Offering a variety of office and event space rentals for nonprofits.**



Convene,  
collaborate,  
and grow.

Convene,  
collaborate,  
and grow.

## Space Descriptions

**Suites:** The Campus has eight 1,000 square foot turn-key suites that can be transformed into the perfect space for teams of 1-10. These offices are leased for 3-5 years starting at \$17.50 per rentable foot, full service (excluding electric bill). Suite tenants are allotted 8 hours per month to use the conference rooms at no charge and receive discounted member rates, if they exceed the allocation.

**Private Co-Working Offices:** Designed for teams of 1-4, the Campus has 10 fully furnished offices. These cozy offices start at \$300 / month, are available with month-to-month or 6-month licenses and are ideal for organizations that need temporary space and teams that need a remote location. There are 2 phone booths that accommodate 2 persons each in the Co-Lab section, which are designed for private 1-on-1 meetings or quiet work.

**Co-Lab Day Pass:** For \$15 / day, nonprofit professionals have a quiet place to work with high speed internet, access to office essentials and a network of nonprofit professionals. These passes are ideal for those looking for an alternative to working from home, looking to build a network, and those who need access to office equipment.

**Virtual Membership:** Nineteen mailboxes for organizations wishing to have a professional business address are available for \$35 per month. Members have 24/7 access and package acceptance in addition to the ability to send and receive mail.

**Partner Suites:** The Campus has two Partner Suites on the 2nd floor designed with grantmaking nonprofits and foundations in mind. Each suite includes one private office and 4-workstation cubicles. These suites share a small conference room, have access to the large boardroom, and share a food and beverage prep area with the Owner Suite.

## Common Areas, Meeting, and Event Spaces

The CF Campus offers a variety of meeting and event space rentals including small and large conference rooms, indoor and outdoor event space, and access to a shared staging kitchen. All conference rooms are furnished with state-of-the-art audio/video (A/V) equipment and high-speed internet.

**First Floor:** Ideal for large meetings or conferences with multiple sessions, as well as networking and reception events, the first floor has:

- three large conference rooms that can be used separately to seat up to 50 guests each or as one large room to seat up to 200 guests,
- a small conference room that seats up to 12 guests,
- an open staging kitchen and break area accommodating up to 100 guests that can be used for networking and social events,
- a courtyard with a stage that can accommodate up to 300 guests for events and fundraisers,
- and 2 phone booths seating up to 2 for private meetings and workspace.

**Second Floor:** Primarily for the use of CFSA, supporting organizations, fund advisors, and CFSA Partners, meeting spaces on this floor include:

- a large boardroom that seats up to 30 guests,
- a small conference room that seats up to 8 guests,
- a second small conference room (reserved primarily for the use of CFSA Partners) seats up to 8 guests,
- three phone booths that seat up to 6 guests,
- a meditation / nursing room,
- and a shared prep kitchen.

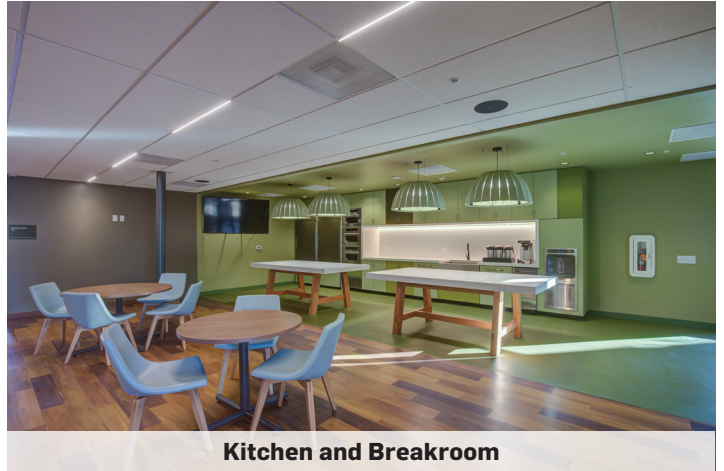
Common area spaces, capacity, primary user, and A/V availability are described in the following table. In addition to the fixed A/V systems in the conference rooms, the Campus has a mobile A/V cart that can be reserved and used in any of the Campus buildings.

<b>Floor</b>	<b>Space</b>	<b>Capacity</b>	<b>Primary User</b>	<b>A/V</b>
1	Large Conference Room (A, B, C)	200	Tenant, Owner, Nonmembe	✓
1	Small Conference Room	12	Tenant, Nonmember	✓
1	Staging Kitchen + Breakroom	100	Tenant, Nonmember	✓
1	Courtyard (Outdoor)	300	Tenant, Owner, Nonmember	
1	Phone Booths (2)	2	Tenant	
1	Shower Room	1	Tenant	
1	Reception Area	2	Tenant, Nonmember	
2	Boardroom	30	Owner, Partner	✓
2	Small Conference Room	8	Owner	✓
2	Donor Room	4	Owner	
2	Partner Small Conference Room	8	Partner	✓
2	Phone Booths (3)	6	Owner, Partner	
2	Meditation Room	1	Owner, Partner	
2	Prep Kitchen	5	Owner, Partner	
2	Reception Area	3	Owner, Partner	

Convene,  
collaborate,  
and grow.



**Entrance**



**Kitchen and Breakroom**



**Courtyard with Stage**



**Courtyard**



**Coworking Offices**



**Coworking Phone Booths**

Convene,  
collaborate,  
and grow.



**Large Conference Room A, B, C**



**Large Conference Room A**



**Suite**



**Small Conference Room**



**Covered Parking**



**Drop In Bar**

Convene,  
collaborate,  
and grow.

## Community Foundation Campus Amenities

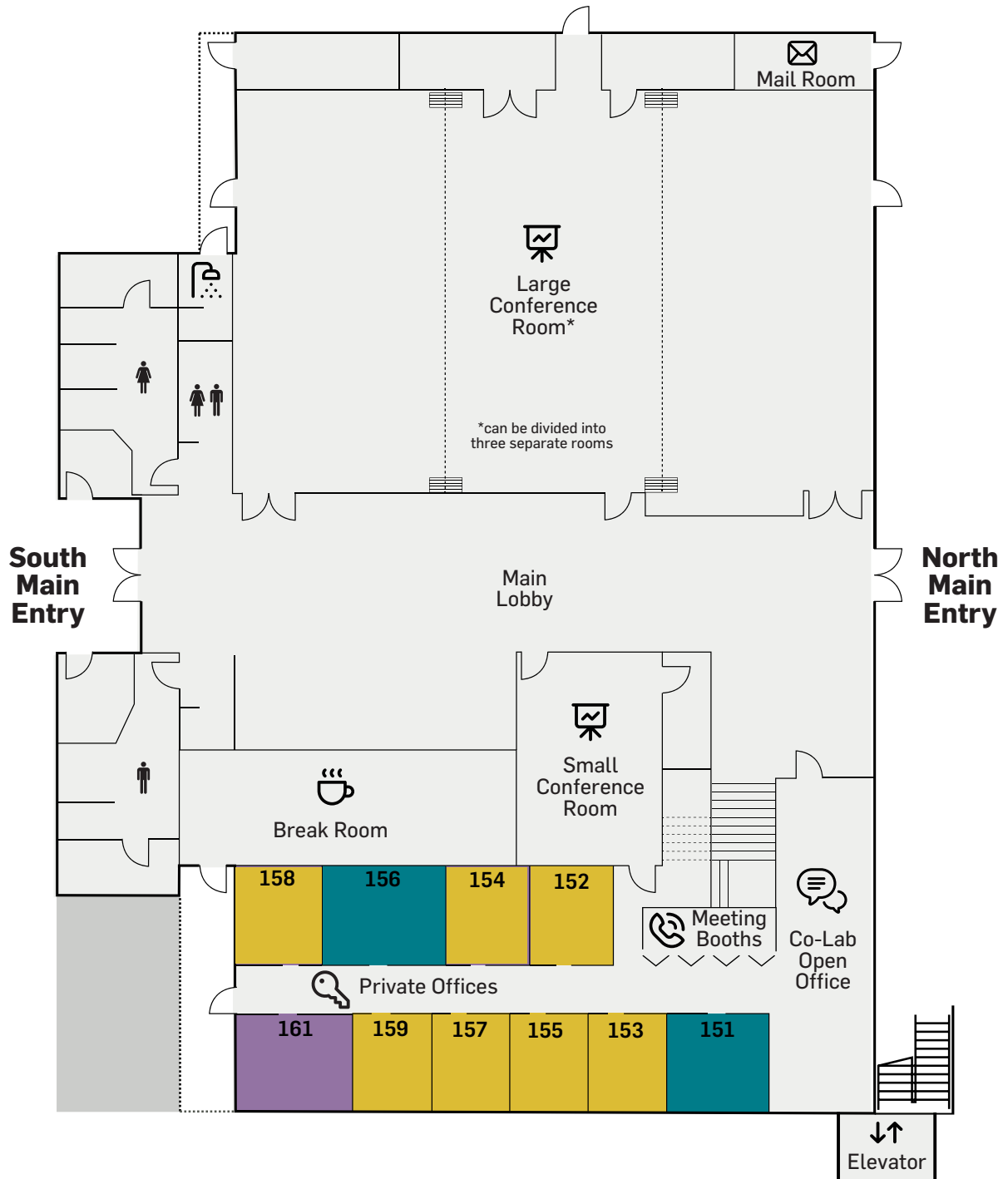
	<b>Co-Lab Member</b> unreserved desk	<b>Co-Office Member 1</b> shared office	<b>Co-Office Member 2</b> for two people	<b>Co-Office Member 3</b> for three people	<b>Co-Office Member 4</b> for four people	<b>Collaborative Suites</b> 1,000 sq/ft
	<b>\$15/day</b> FREE first drop-in	<b>\$300/mo</b> 6 mo agreement	<b>\$600/mo</b> 6 mo agreement	<b>\$750/mo</b> 6 mo agreement	<b>\$1000/mo</b> 6 mo agreement	<b>\$17.50 sq/ft</b> 3-5 yr agreement
Month-to-Month	\$200/mo	\$350/mo	\$650/mo	\$850/mo	\$1100/mo	—
Requirements	Submit application	Submit application	Submit application	Submit application	Submit application	Submit application
Agreement Type	Member	License Member	License Member	License Member	License Member	Lease
Set-up Fee/Deposit	—	\$25 set-up fee	\$25 set-up fee	\$25 set-up fee	\$25 set-up fee	Deposit Required
Keycard Access	M–F 8am–6pm	24/7	24/7	24/7	24/7	24/7
Allotted Conference Room Hours*	—	2 free hrs/mo	8 free hrs/mo	8 free hrs/mo	8 free hrs/mo	8 free hrs/mo
Tenant Improvements	—	—	—	—	—	Available
Furnishings	✓	✓	✓	✓	✓	—
Dedicated Desk(s)	—	✓	✓	✓	✓	✓
Access to Capacity Building Programming	✓	✓	✓	✓	✓	✓
WiFi / Internet	✓	✓	✓	✓	✓	✓
Meeting Booths x2 (up to 4 people)	✓	✓	✓	✓	✓	✓
CF Campus website listing	—	✓	✓	✓	✓	✓
Mailbox Service	—	✓	✓	✓	✓	✓
Business-Class Printers	✓	✓	✓	✓	✓	BYOP
Daily Cleaning Service	✓	✓	✓	✓	✓	✓

\* After complimentary hours, please see pricing chart.

*Just need a mailbox? We offer nonprofits a professional business address and package reception for \$35 per month!*

Convene,  
collaborate,  
and grow.

### Private Offices and Amenities: Main Building, First Level





Convene,  
collaborate,  
and grow.

## Suites: Outer Buildings

